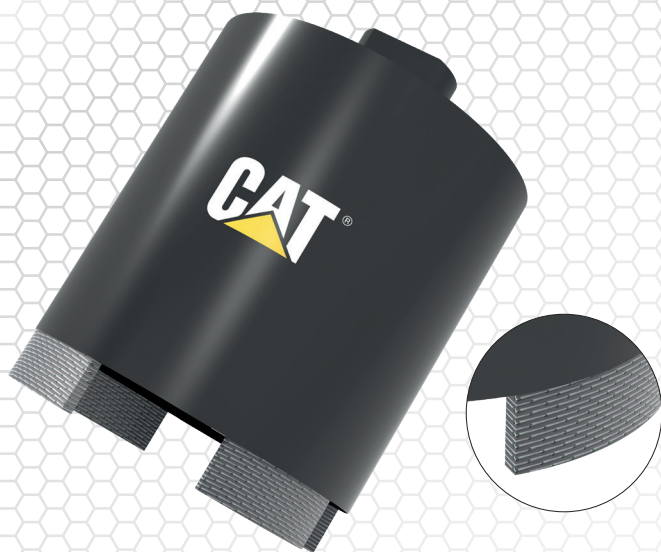


**CAT****XMATSD****MATRIX® SEGMENTED SOCKET****UNIVERSAL MULTI MATERIALS****1000 Expert**

CAT® 1000 Expert Matrix® Auto Diamond Placement, laser welded dry diamond core drills are the most advanced dry core drill. Ultra high quality diamond grit and high quality matrix enable this product to have a great application span across a wide range of applications from hard to general purposes materials. Ultra long life and fast drilling penetration.

DO NOT USE ON IMPACT MODE. LET THE DIAMOND DO THE WORK .

ATTRIBUTES

- **LASER WELDED - FAST AGGRESSIVE DRILLING**
- **LONG LIFE HIGH QUALITY DIAMOND GRIT & BOND FORMULATION.**

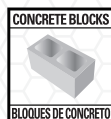
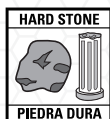
APPLICATION

★ ★ ★ ★
HARD TO MEDIUM AGGREGATE CONCRETE (CHERT - TRAP ROCK - RIVER GRAVEL), MEDIUM AGGREGATE CONCRETE (TRAPROCK - QUARTZ), SOFT - MEDIUM AGGREGATE CONCRETE (GRANITE - LIMESTONE), CLASS A ENGINEERING BRICK 125 N/MM², TERRACOTTA, CLASS B ENGINEERING BRICK 75N/MM², HARD LIMESTONE, LIMESTONE AGGREGATE CONCRETE, LIGHTLY REINFORCED CONCRETE, CONCRETE PAVIOURS - KERBS - SLABS, CONCRETE ROOF TILES - PIPES, HARD FACING BRICK, MEDIUM FACING BRICK, CONCRETE BLOCKS OVER 15N/MM², HARD SLATE, HARD SANDSTONE (FINE GRIT), MEDIUM SANDSTONE (MEDIUM GRIT) ON HARDER MATERIALS USE A SLOWER PERIPHERAL SPEED RPM.

★ ★ ★
GRANITE, QUARTZITE, HEAVILY STEEL REINFORCED CONCRETE, CRITICALLY HARD AGGREGATE CONCRETE (FLINT, CHERT), REFRACTORY BRICK, CLAY PIPE - ROOF TILES, CLAY PAVIOURS, CLAY PAVIOURS, INDIAN STONE (KOTA), TRAVERTINE, PORPHYRY, BASALT, SOFT SLATE, MARBLE, SOFT SANDSTONE (COARSE GRIT), CONCRETE SCREED, PLASTER - GROUT, CONCRETE BLOCK UNDER 15N/MM², THERMAL BLOCK 7 N/MM², LIGNACITE BLOCKS.

★ ★
QUARRY TILES, ASPHALT OVER CONCRETE, LIGNACITE BLOCKS.

★
ASPHALT, GREEN CONCRETE UNIVERSAL, GREEN CONCRETE WITH VERY HARD AGGREGATE, GREEN CONCRETE WITH MEDIUM HARD AGGREGATE, GREEN CONCRETE WITH MEDIUM SOFT AGGREGATE, LAVA ROCK, PUMICE.

LASER WELDED**MATRIX**
AUTO PLACEMENT TECHNOLOGY**DRY DRILLING****PLASTER****YESO****HARD CONCRETE****AGREGADO DURO****CONCRETE BLOCKS****BLOQUES DE CONCRETO****BRICKS****LADRILLOS****HARD STONE****PIEDRA DURA**

PRODUCT		DIAMETER		SEGMENT HEIGHT		SEGMENT WIDTH		FITTING TYPE		MACHINES USED
PART NO	CODE NO	MM	INCH	MM	INCH	MM	INCH	MM	INCH	
DA39344	XMATSD62	68	2 43/64	10	0.394	3.5	0.138	M16 FEMALE	N/A	
DA39345	XMATSD82	82	3 15/64	10	0.394	3.5	0.138	M16 FEMALE	N/A	



WARNING: This product can expose you to "Nickel" which is known to the State of California to cause cancer and birth defects.
ADVERTENCIA: Este producto puede exponerlo a un "Níquel" que el Estado de California sabe que causa cáncer y defectos de nacimiento.
AVERTISSEMENT: ce produit peut vous exposer à un "Nickel" connu de l'État de Californie pour provoquer le cancer et des malformations congénitales. www.P65Warnings.ca.gov



©2023 Caterpillar. All Rights Reserved. CAT, CATERPILLAR, LET'S DO THE WORK, their respective logos, "Caterpillar Corporate Yellow", the "Power Edge" and Cat "Modern Hex" trade dress as well as corporate and product identity used herein, are trademarks of Caterpillar and may not be used without permission. C6 DIAMOND LLC, a licensee of Caterpillar Inc.

SILICA DUST: Workers who are exposed to respirable crystalline silica dust are at increased risk of developing serious silica-related diseases. It is necessary to use saws and other machinery that is equipped with an integrated water delivery system that continuously feeds water to the blade. Operate and maintain all tools in accordance with manufacturer's instructions to minimize dust emissions and always wear the correct ventilator. For more info visit: www.osha.gov/sites/default/files/publications/OSHA3681.pdf

catdiamondtools.com

EN2023XMATSD