

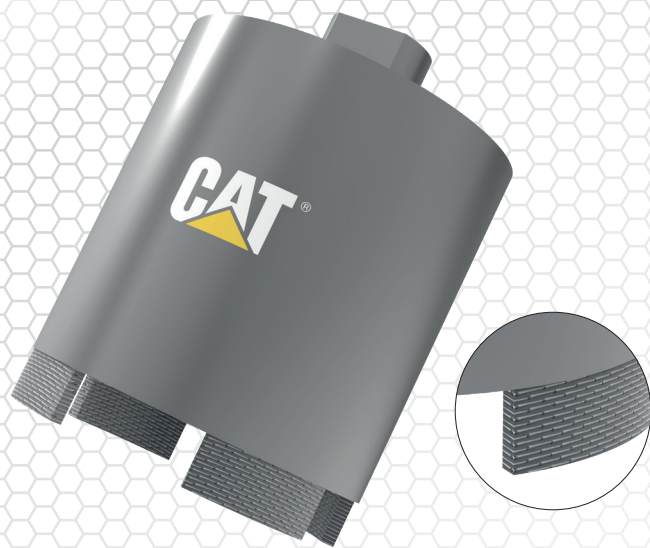


# SCB

## SEGMENTED DRY SOCKET

### GENERAL PURPOSE

400 Pro



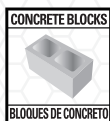
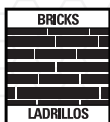
Cat® 400 Pro laser welded universal material socket core bits are designed to drill a wide range of applications. In use they have long service life & fast drilling speed & can be used with or without dust extraction & also used wet or dry.

#### ATTRIBUTES

- **LASER WELDED - FAST AGGRESSIVE DRILLING**
- **LONG LIFE HIGH QUALITY DIAMOND GRIT & BOND FORMULATION.**

#### APPLICATION

★★★★	SOFT - MEDIUM AGGREGATE CONCRETE (GRANITE - LIMESTONE), TERRACOTTA, CONCRETE PAVERS, CURBS, SLABS, CONCRETE ROOF TILES, PIPES, SOFT FACING BRICKS, DH100:DK112 CONCRETE BLOCKS OVER 15N/MM², SOFT SLATE, MEDIUM SANDSTONE (MEDIUM GRIT), SOFT SANDSTONE (COARSE GRIT), CONCRETE SCREED, PLASTER - GROUT, CONCRETE BLOCK UNDER 15N/MM², THERMAL BLOCK 7 N/MM². ON HARDER MATERIALS USE A SLOWER PERIPHERAL SPEED RPM.
★★★	MEDIUM AGGREGATE CONCRETE (TRAPROCK - QUARTZ), CLASS B ENGINEERING BRICK 75N/MM², LIGHT REINFORCED CONCRETE, LIMESTONE AGGREGATE CONCRETE, MEDIUM FACING BRICK, HARD SLATE, MARBLE, HARD SANDSTONE (FINE GRIT), MORTAR (HARD), MORTAR (ABRASIVE).
★★	HARD TO MEDIUM AGGREGATE CONCRETE (CHERT - TRAP ROCK - RIVER GRAVEL), REFRACTORY BRICK, INDIAN STONE (KOTA), TRAVERTINE, PORPHYRY, BASALT, HARD LIMESTONE, LIGHTLY REINFORCED CONCRETE, HARD FACING BRICK, LIGNACITE BLOCKS, LAVA ROCK, PUMICE.
★	GRANITE, QUARTZITE, CRITICALLY HARD AGGREGATE CONCRETE (FLINT, CHERT), CLASS A ENGINEERING BRICK 125 N/MM², CLASS A ENGINEERING BRICK 125 N/MM².



DRY DRILLING

PRODUCT		DIAMETER		SEGMENT HEIGHT		SEGMENT WIDTH		FITTING TYPE		MACHINES USED
PART NO	CODE NO	MM	INCH	MM	INCH	MM	INCH	MM	INCH	
DA39026	SCB68M16	68	2 43/64	10	0.394	3.5	0.138	M16 F	N/A	
DA39027	SCB82M16	82	3 15/64	10	0.394	3.5	0.138	M16 F	N/A	



**WARNING:** This product can expose you to "Nickel" which is known to the State of California to cause cancer & birth defects.  
**ADVERTENCIA:** Este producto puede exponerlo a un "Níquel" que el Estado de California sabe que causa cáncer y defectos de nacimiento.  
**AVERTISSEMENT:** ce produit peut vous exposer à un "Nickel" connu de l'État de Californie pour provoquer le cancer et des malformations congénitales. [www.P65Warnings.ca.gov](http://www.P65Warnings.ca.gov)



©2023 Caterpillar. All Rights Reserved. CAT, CATERPILLAR, LET'S DO THE WORK, their respective logos, "Caterpillar Corporate Yellow", the "Power Edge" & Cat "Modern Hex" trade dress as well as corporate & product identity used herein, are trademarks of Caterpillar & may not be used without permission. C6 DIAMOND LLC, a licensee of Caterpillar Inc.

**SILICA DUST:** Workers who are exposed to respirable crystalline silica dust are at increased risk of developing serious silica-related diseases. It is necessary to use saws & other machinery that is equipped with an integrated water delivery system that continuously feeds water to the blade. Operate & maintain all tools in accordance with manufacturer's instructions to minimize dust emissions & always wear the correct ventilator. For more info visit: [www.osha.gov/sites/default/files/publications/OSHA3681.pdf](http://www.osha.gov/sites/default/files/publications/OSHA3681.pdf)